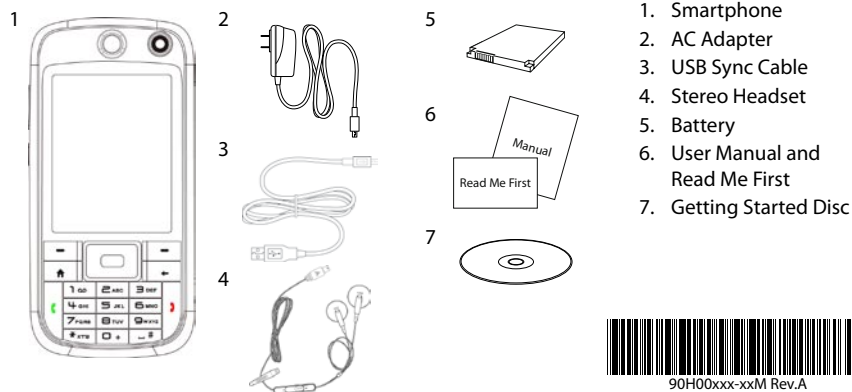


## What's in the Box

These are the items that you should find inside the box.



## Read Me First

This Read Me First will help you get started with using your Microsoft® Windows Mobile® 6 Standard powered phone. We recommend that you have this guide handy when you start using your phone.

For a more complete reference, consult the User Manual that came with the phone.

# smartphone

## Before You Turn On ...

### A. Install the SIM/USIM Card

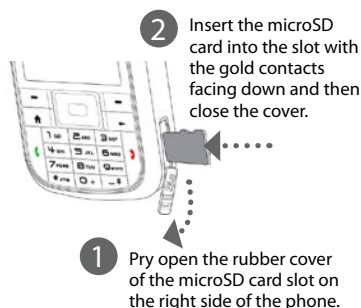
- 1 Press the battery cover downward to slide it open.
- 2 Insert the SIM/USIM card into the slot with the gold contacts facing down. Push the SIM/USIM card all the way in until the card locks into place.



- 3 Replace the battery cover.

**Tip** To take the SIM/USIM card out, press and hold the slot latch then push the SIM/USIM card out from the bottom of the card.

### B. Install a microSD™ card (not included in box)



**Tip** To remove the microSD card, press it to pop it out of the slot.

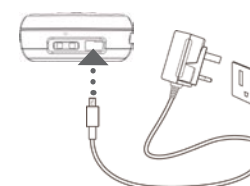
### C. Install the battery

- 1 Press the battery cover downward to slide it open.
- 2 Align the exposed metal contacts on the edge of the battery with the prongs in the body of the phone.



- 3 Push the bottom of the battery into place and then replace the battery cover.

### D. Charge the battery



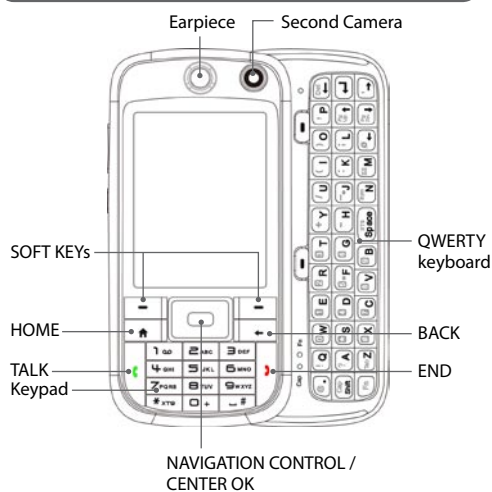
The battery is not fully charged out of the box. Charge the battery by plugging the AC adapter plug to an electrical outlet or plugging the USB cable to the sync connector port at the bottom of the phone. The battery is fully charged after about 3 hours of charging.

### E. Turn on/off the phone

Press and hold the POWER button for about 3 seconds to turn on or off the phone.



## The Smartphone



## Home Screen

This bar displays various indicators that inform you of message notifications, network status, battery power, signal strength, and more.



This area displays important information, such as upcoming appointments, status indicators, the current date and time, and HTC Home.

For more information of HTC Home, refer to the User Manual.

This bar lets you access the Start menu and open Contacts, Call History, or Messages. Click the left or right SOFT KEY to open the associated program.

## Make that First Call

Do one of the following:

- Enter the phone number by pressing keys on the keypad, and press TALK ( ).
- Start pressing the contact's name or number and the matching contacts will appear on the Phone screen. Use the NAVIGATION CONTROL to select the contact and press TALK ( ).
- To make a video call, enter the phone number, and then click **Menu > Video Call**.

**Tip** For hands-free operation, connect your phone with the wired headset or Bluetooth® headset (not included) to your phone. To learn how to connect a Bluetooth headset to your phone, refer to the User Manual.



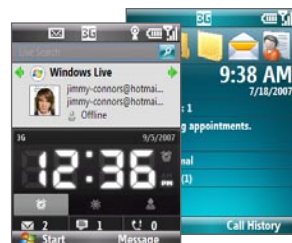
## Personalize Your Smartphone

### A. Change the Home screen

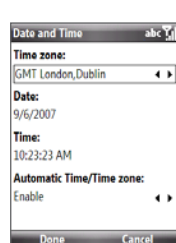
Click **Start > Settings > Home Screen**.

### B. Set the date and time

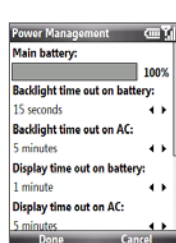
Click **Start > Settings > Clock & Alarm > Date and Time**.



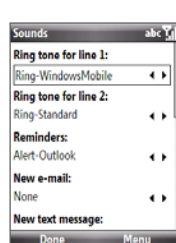
A



B



C



D

### C. Manage power settings

Click **Start > Settings > Power Management**.

### D. Change the ring tone

Click **Start > Settings > Sounds**.

## Secure Your Smartphone

Protect your phone from unauthorized access by enabling the SIM/USIM PIN and/or Device lock.

### A. To enable SIM PIN

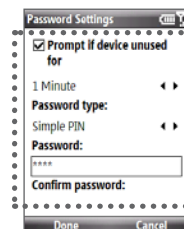
Enabling the SIM PIN (Personal Identification Number) requires you to enter a password first before you can use the phone features of your smartphone.

You can enable the SIM PIN by clicking **Start > Settings > Security > Enable SIM PIN**.

### B. To enable device lock

Enabling the device lock requires you to enter a password to unlock your phone after it has been left idle for a set period of time.

1. Click **Start > Settings > Security > Device Lock**.
2. Select the **Prompt if device unused for** check box and enter the time you want.
3. Select the **Password type**.
4. Enter and confirm the password, then click **Done**.



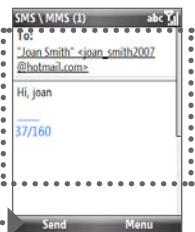
Done

## Send a Text Message or Picture Message

Send out short text messages or a picture message to another mobile phone.

- 1 Click **Start > Messaging > SMS \ MMS**.
- 2 Click **Menu > New > SMS** to create a text message or **MMS** to create a picture message.
- 3 Enter the mobile phone number (for picture messages, you can also enter an e-mail address) in **To** and then write or create your message. Click **Send**.

**Note** You need a GPRS connection to send and receive picture messages.



Text message



Picture message

## Enter Information

The phone comes with a keypad and a slide-out QWERTY keyboard. Use the preferred input method to enter information and type messages on your phone.



When using the keypad, press the \* key to change the input method, or press and hold the \* key to open a menu where you can select the input method to use.



To enter numbers or symbols (labeled at the upper left of each key), press the **Fn** key and then press the corresponding key. Press **Fn** twice to enter all numbers or symbols.

## Take a Picture and Send it via Picture Message or E-mail

Take out your phone and capture those precious moments.

The photo is automatically saved in your phone after you shoot unless you click the **Delete** icon (🗑️) to delete it on the Review screen. Click the **Send** icon (✉️) to send the photo via picture message or e-mail.



1 Press the CAMERA button.



2 Press CENTER OK to take the shot.

3 Click this icon and then click **Send** to send the photo via picture message or e-mail.

**Tip** Refer to the User Manual to learn more about the Camera.

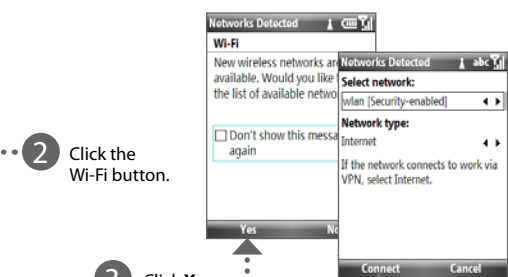
## Go Online and Surf the Web

Go online by turning on Wi-Fi® on your phone. If there is no Wi-Fi hotspot in your area, you can still connect to the Internet by using the GPRS or dial-up service of your wireless service provider. Refer to the User Manual to learn how to connect using GPRS or dial up.

When connected, you can use Internet Explorer® Mobile (click **Start > Internet Explorer**) to surf the Web.



1 Press the COMM MANAGER button.



2 Click the Wi-Fi button.

3 Click **Yes**.

4 Choose the network you want to use and click **Connect**.

## Get E-mail on Your Phone

Send and receive e-mails on your phone. Set up your phone so you can send and receive e-mail messages using your favorite e-mail service.



Click **Start > Messaging > New E-mail Account**.

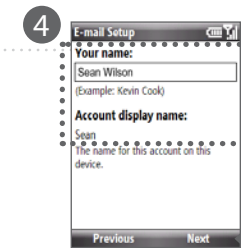


Type in your **E-mail address** and click **Next**.

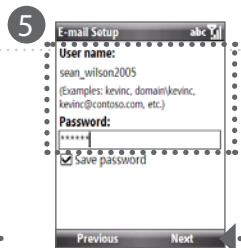


Click **Next**.

**Note** If Auto Setup is unsuccessful, you need to manually enter the settings in the succeeding screens.



Type in **Your Name** and **Account display name**. Click **Next**.



Type in the **User name** and **Password**. Click **Next**.



Select the frequency to send and receive e-mail. Click **Finish**.

You can synchronize your phone with your company's Microsoft Exchange server so you get your company e-mails on your phone. Refer to the User Manual to learn how to get your company e-mails on your phone.

## Synchronize Your Phone and PC

Synchronize your PC with your phone to keep information up-to-date on your phone.

Depending on the Operating System of your PC, you will need either Microsoft ActiveSync® 4.5 (or later) or Windows Mobile® Device Center to synchronize your phone with your PC.

### Set up ActiveSync on Windows XP

- 1 Install ActiveSync 4.5 on your PC from the Getting Started Disc.
- 2 Connect your phone to your PC via USB. The Synchronization Setup Wizard automatically starts and guides you to create a synchronization partnership. Click **Next** to proceed.



3 To synchronize your phone with your computer, clear the **Synchronize directly with a server running Microsoft Exchange Server** check box then click **Next**.

4 Select the information types that you want to synchronize and then click **Next**.



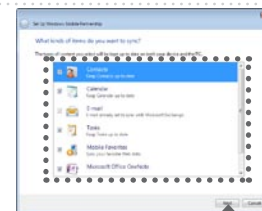
5 Click **Finish**.

### Set up Windows Mobile Device Center on Windows Vista®

1 Connect your phone to your PC. In Windows Mobile Device Center, click **Set up your device**.



2 Select the information you want to synchronize and click **Next**.



3 Type in a name for your smartphone and click **Set Up**.

